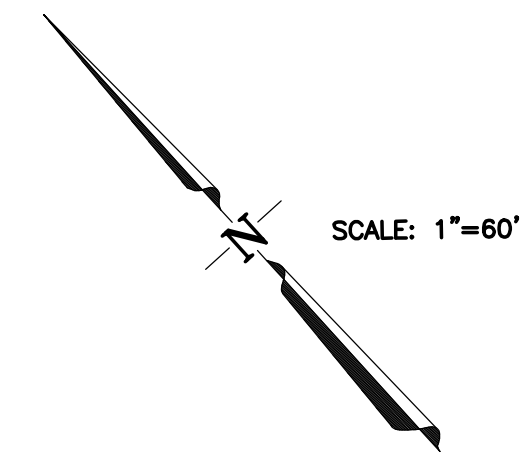


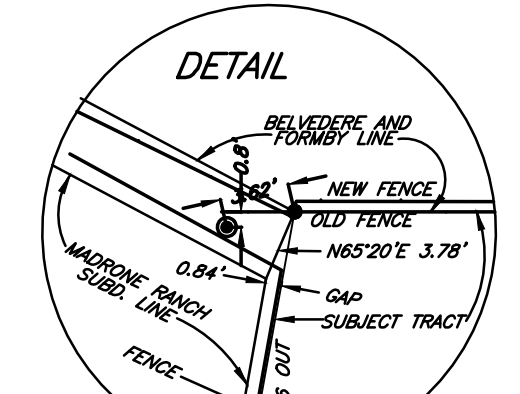
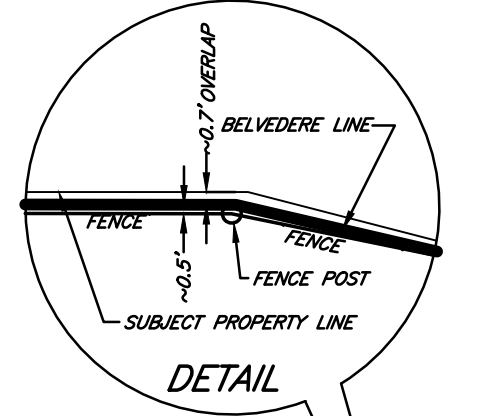
TOPOGRAPHIC SURVEY

FORMERLY
WILLIAM L. FORMBY
443.73 ACRES
VOL. 12597, PG. 1098

BELVEDERE PHASE IV [200800252]

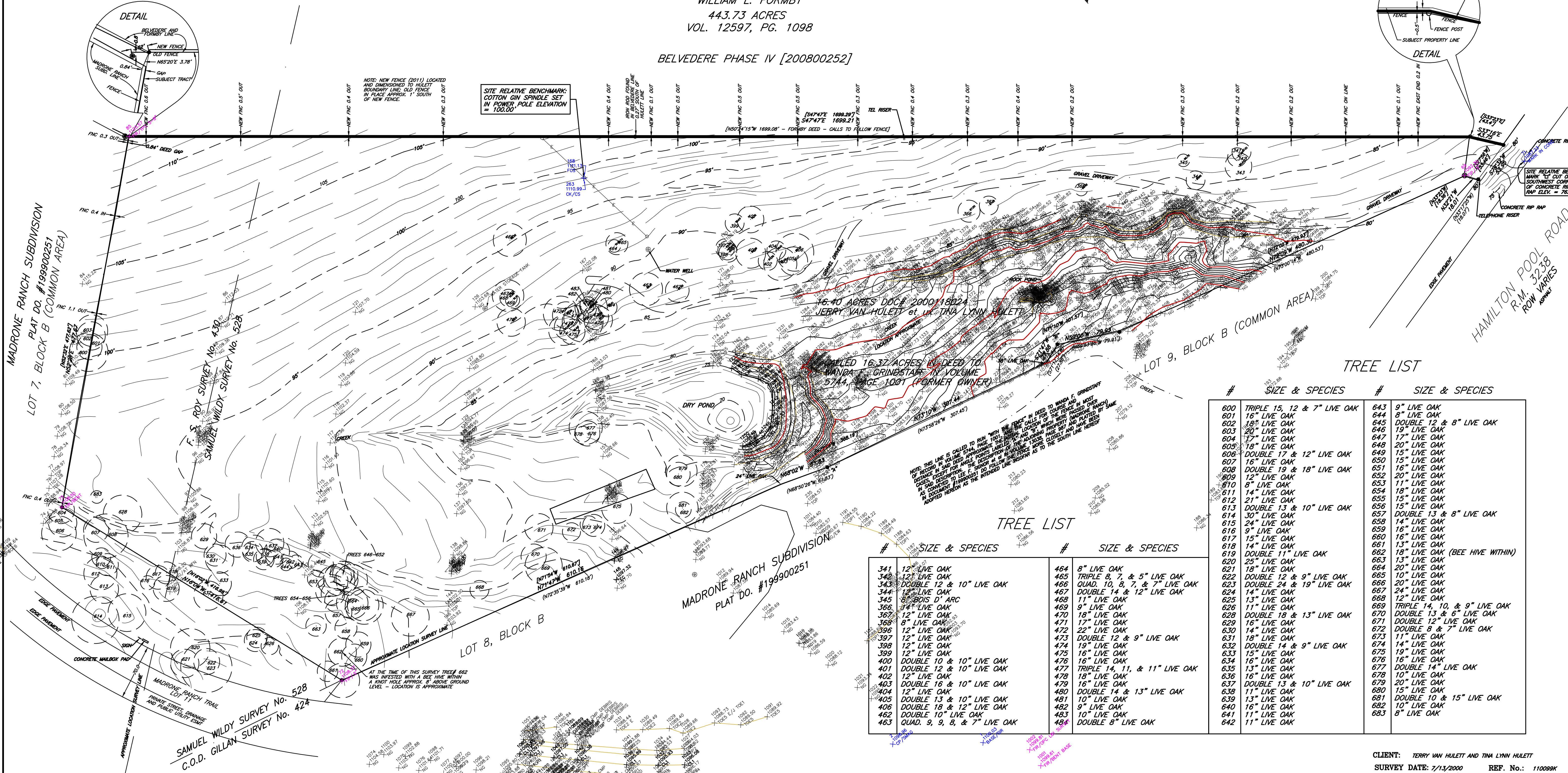


- LEGEND**
- = IRON ROD FOUND
 - = CAPPED IRON ROD TO BE SET STAMPED "RPLS 2693"
 - ⊙ = IRON PIPE FOUND
 - = WIRE FENCE
 - = OVERHEAD ELECTRIC
 - () = RECORD DATA FROM PLAT RECORDS
 - [] = RECORD DATA FROM DEED RECORDS



SITE RELATIVE BENCHMARK:
COTTON GIN SPINDLE SET
IN PLACE APPROX. 1' SOUTH
OF NEW FENCE
ELEVATION = 100.00

NOTE: NEW FENCE (2011) LOCATED
AND DIMENSIONED TO HULETT
BOUNDARY LINE, OLD FENCE
IN PLACE APPROX. 1' SOUTH
OF NEW FENCE.



TREE LIST

#	SIZE & SPECIES	#	SIZE & SPECIES
600	TRIPLE 15, 12 & 7" LIVE OAK	643	9" LIVE OAK
601	16" LIVE OAK	644	8" LIVE OAK
602	18" LIVE OAK	645	DOUBLE 12 & 8" LIVE OAK
603	20" LIVE OAK	646	19" LIVE OAK
604	17" LIVE OAK	647	17" LIVE OAK
605	19" LIVE OAK	648	20" LIVE OAK
606	DOUBLE 17 & 12" LIVE OAK	649	15" LIVE OAK
607	16" LIVE OAK	650	15" LIVE OAK
608	DOUBLE 19 & 18" LIVE OAK	651	16" LIVE OAK
609	12" LIVE OAK	652	20" LIVE OAK
610	8" LIVE OAK	653	11" LIVE OAK
611	14" LIVE OAK	654	18" LIVE OAK
612	21" LIVE OAK	655	15" LIVE OAK
613	DOUBLE 13 & 10" LIVE OAK	656	15" LIVE OAK
614	30" LIVE OAK	657	DOUBLE 13 & 8" LIVE OAK
615	24" LIVE OAK	658	14" LIVE OAK
616	9" LIVE OAK	659	16" LIVE OAK
617	15" LIVE OAK	660	16" LIVE OAK
618	11" LIVE OAK	661	13" LIVE OAK
619	DOUBLE 11" LIVE OAK	662	18" LIVE OAK (BEE HIVE WITHIN)
620	25" LIVE OAK	663	13" LIVE OAK
621	18" LIVE OAK	664	20" LIVE OAK
622	DOUBLE 12 & 9" LIVE OAK	665	10" LIVE OAK
623	DOUBLE 24 & 19" LIVE OAK	666	20" LIVE OAK
624	14" LIVE OAK	667	24" LIVE OAK
625	13" LIVE OAK	668	12" LIVE OAK
626	11" LIVE OAK	669	TRIPLE 14, 10, & 9" LIVE OAK
628	DOUBLE 18 & 13" LIVE OAK	670	DOUBLE 13 & 6" LIVE OAK
629	16" LIVE OAK	671	DOUBLE 12" LIVE OAK
630	14" LIVE OAK	672	DOUBLE 8 & 7" LIVE OAK
631	18" LIVE OAK	673	11" LIVE OAK
632	DOUBLE 14 & 9" LIVE OAK	674	14" LIVE OAK
633	15" LIVE OAK	675	19" LIVE OAK
634	16" LIVE OAK	676	16" LIVE OAK
635	13" LIVE OAK	677	DOUBLE 14" LIVE OAK
636	16" LIVE OAK	678	10" LIVE OAK
637	DOUBLE 13 & 10" LIVE OAK	679	20" LIVE OAK
638	11" LIVE OAK	680	15" LIVE OAK
639	13" LIVE OAK	681	DOUBLE 10 & 15" LIVE OAK
640	16" LIVE OAK	682	10" LIVE OAK
641	10" LIVE OAK	683	8" LIVE OAK
642	11" LIVE OAK		

TREE LIST

#	SIZE & SPECIES	#	SIZE & SPECIES
341	12" LIVE OAK	464	8" LIVE OAK
342	12" LIVE OAK	465	TRIPLE 8, 7, & 5" LIVE OAK
343	DOUBLE 12 & 10" LIVE OAK	466	QUAD. 10, 8, 7, & 7" LIVE OAK
344	12" LIVE OAK	467	DOUBLE 14 & 12" LIVE OAK
345	BOBOLIVIA	468	11" LIVE OAK
346	8" LIVE OAK	469	9" LIVE OAK
347	12" LIVE OAK	470	18" LIVE OAK
348	8" LIVE OAK	471	17" LIVE OAK
349	12" LIVE OAK	472	22" LIVE OAK
350	12" LIVE OAK	473	DOUBLE 12 & 9" LIVE OAK
351	12" LIVE OAK	474	19" LIVE OAK
352	12" LIVE OAK	475	16" LIVE OAK
353	DOUBLE 10 & 10" LIVE OAK	476	18" LIVE OAK
354	DOUBLE 12 & 10" LIVE OAK	477	TRIPLE 14, 11, & 11" LIVE OAK
355	12" LIVE OAK	478	18" LIVE OAK
356	DOUBLE 16 & 10" LIVE OAK	479	16" LIVE OAK
357	12" LIVE OAK	480	DOUBLE 14 & 13" LIVE OAK
358	DOUBLE 13 & 10" LIVE OAK	481	10" LIVE OAK
359	DOUBLE 18 & 12" LIVE OAK	482	9" LIVE OAK
360	DOUBLE 10" LIVE OAK	483	10" LIVE OAK
361	QUAD. 9, 9, 8, & 7" LIVE OAK	484	DOUBLE 8" LIVE OAK

LEGAL DESCRIPTION:
16.40 ACRES OF LAND, MORE OR LESS, OUT OF THE F. S. ROY SURVEY No. 430 AND THE SAMUEL WILDY SURVEY No. 528, BOTH IN TRAVIS COUNTY, TEXAS, AND BEING MORE PARTICULARLY DESCRIBED BY METES AND BOUNDS IN DOCUMENT 2000118024, TRAVIS COUNTY OFFICIAL PUBLIC RECORDS

FLOOD STATEMENT:
ACCORDING TO THE F.E.M.A. FLOOD INSURANCE RATE MAP 48453C0395H, DATED 9/26/08 THIS PROPERTY LIES IN ZONE "X", DEFINED THEREON AS "AREAS DETERMINED TO LIE OUTSIDE THE 0.2% ANNUAL CHANCE FLOODPLAIN..."
NOTE: THIS STATEMENT AND THE F.I.R.M. FROM WHICH IT WAS DEVELOPED ARE FOR ADMINISTRATION OF THE NATIONAL FLOOD INSURANCE PROGRAM ONLY. THE F.I.R.M. DOES NOT NECESSARILY IDENTIFY ALL AREAS SUBJECT TO FLOODING; PARTICULARLY FROM LOCAL DRAINAGE SOURCES OF SMALL SIZE, OR ALL PLANIMETRIC FEATURES OUTSIDE SPECIAL FLOOD HAZARD AREAS. THE COMMUNITY MAP REPOSITORY SHOULD BE CONSULTED FOR POSSIBLE FLOOD HAZARD INFORMATION PRIOR TO THE USE OF THIS MAP FOR PROPERTY PURCHASE OR CONSTRUCTION PURPOSES.

CLIENT: TERRY VAN HULETT AND TINA LYNN HULETT
SURVEY DATE: 7/13/2000 REF. No.: 110099K
TOPO DATE: 9/14/11 PLAN NO.: 110119K

SAMFORD & ASSOCIATES
LAND SURVEYING
1400 HILLSIDE TERRACE
BUDA, TEXAS 78610
TEL: (512) 441-5601 FAX: (512) 441-5603

MICHAEL SAMFORD, R.P.L.S. 3693 DATE